

# **Tarjetas: Contaminantes en el agua**

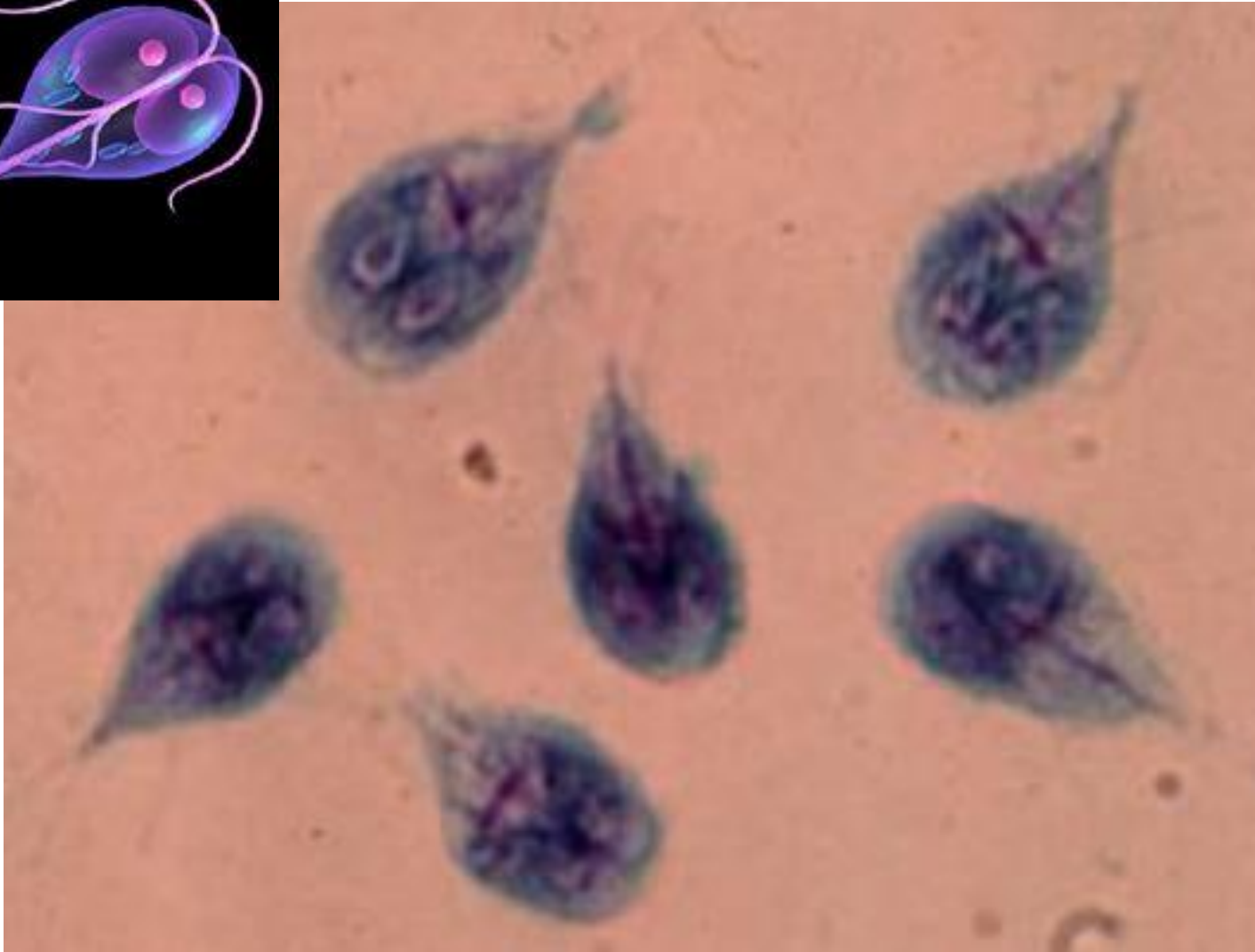
## **Nanofiltración:**

### ***Actividad 1***

# Instrucciones para imprimir

- **Identifique cuántos juegos (conjuntos) de tarjetas necesita para realizar esta actividad con grupos pequeños de estudiantes.**
- **Imprima (a color) el PowerPoint utilizando la configuración de 4 diapositivas por página.**
- **Corte las tarjetas por separado y haga los juegos de tarjetas para los grupos pequeños de estudiantes.**
- **Para poder utilizarlas repetidamente, es recomendable imprimir las tarjetas en cartulina (cartón) y laminarlas.**

# Giardia



<http://emedicine.medscape.com/article/176718-overview>

[www.emedmd.com/content/giardiasis-balantidiasis-isosporiasis-and-microsporidiosis](http://www.emedmd.com/content/giardiasis-balantidiasis-isosporiasis-and-microsporidiosis)

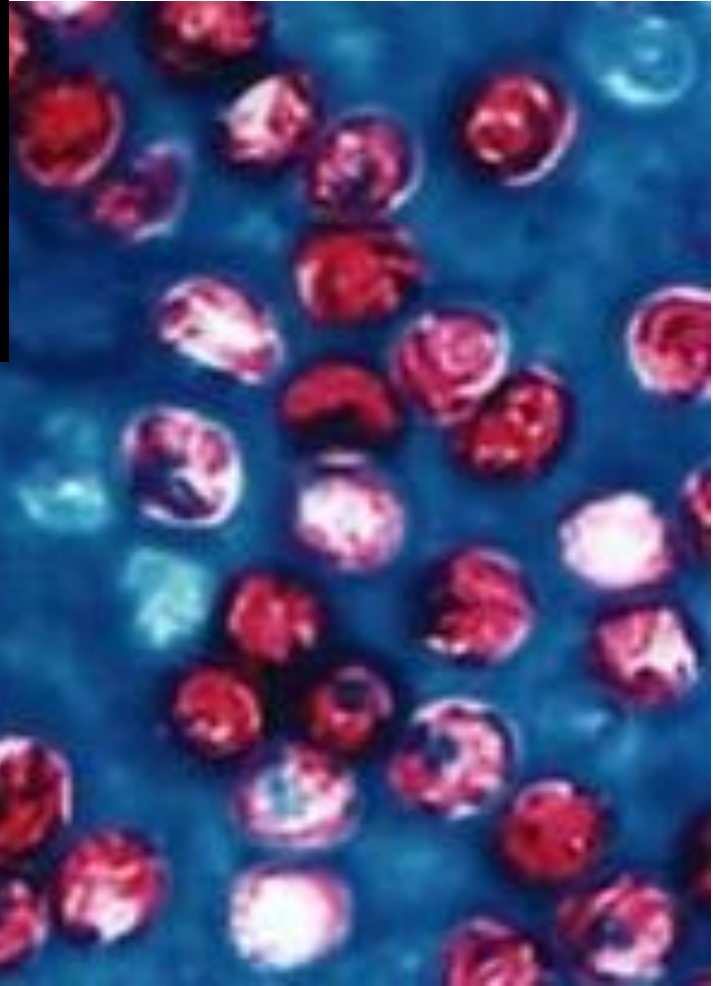
# E. Coli



[www.nutrasilver.com/ecoli/ecoli-pictures](http://www.nutrasilver.com/ecoli/ecoli-pictures)

<https://news.liverpool.ac.uk/2015/09/21/scientists-discover-how-e-coli-survives-stomach-acid/>

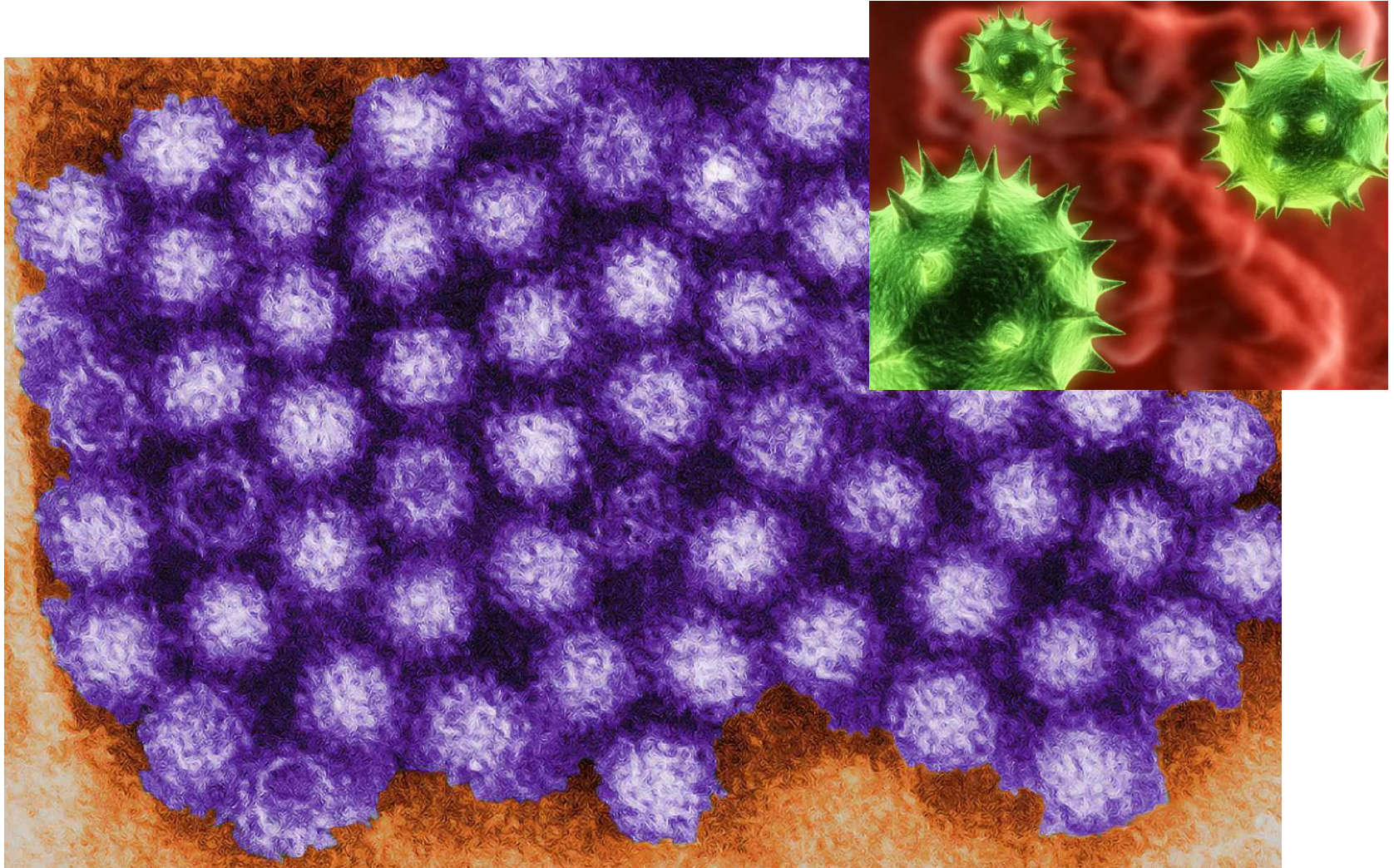
# Cryptosporidium



[www.cdc.gov/parasites/crypto/](http://www.cdc.gov/parasites/crypto/)

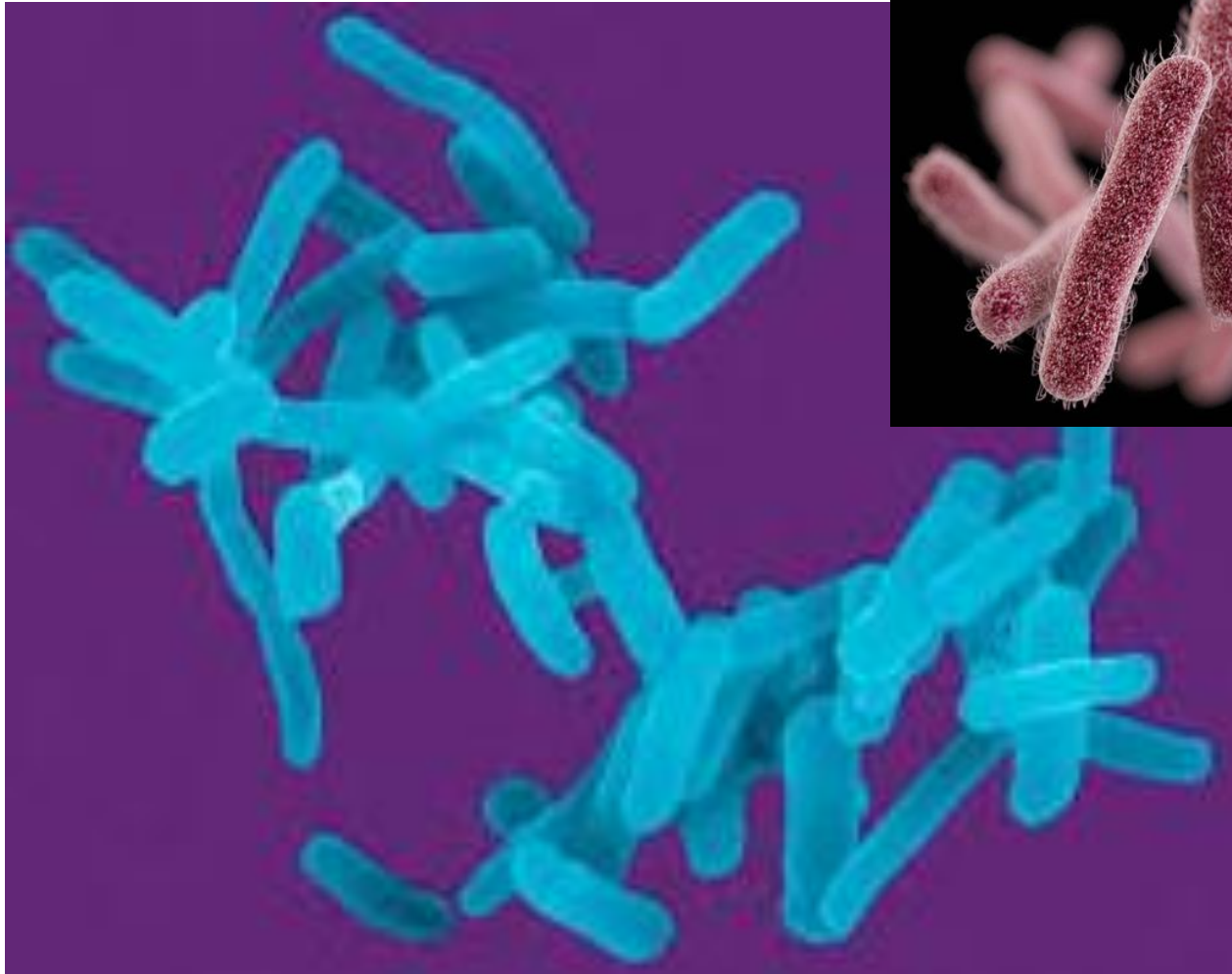
<https://microbewiki.kenyon.edu/index.php/Cryptosporidium>

# Norovirus



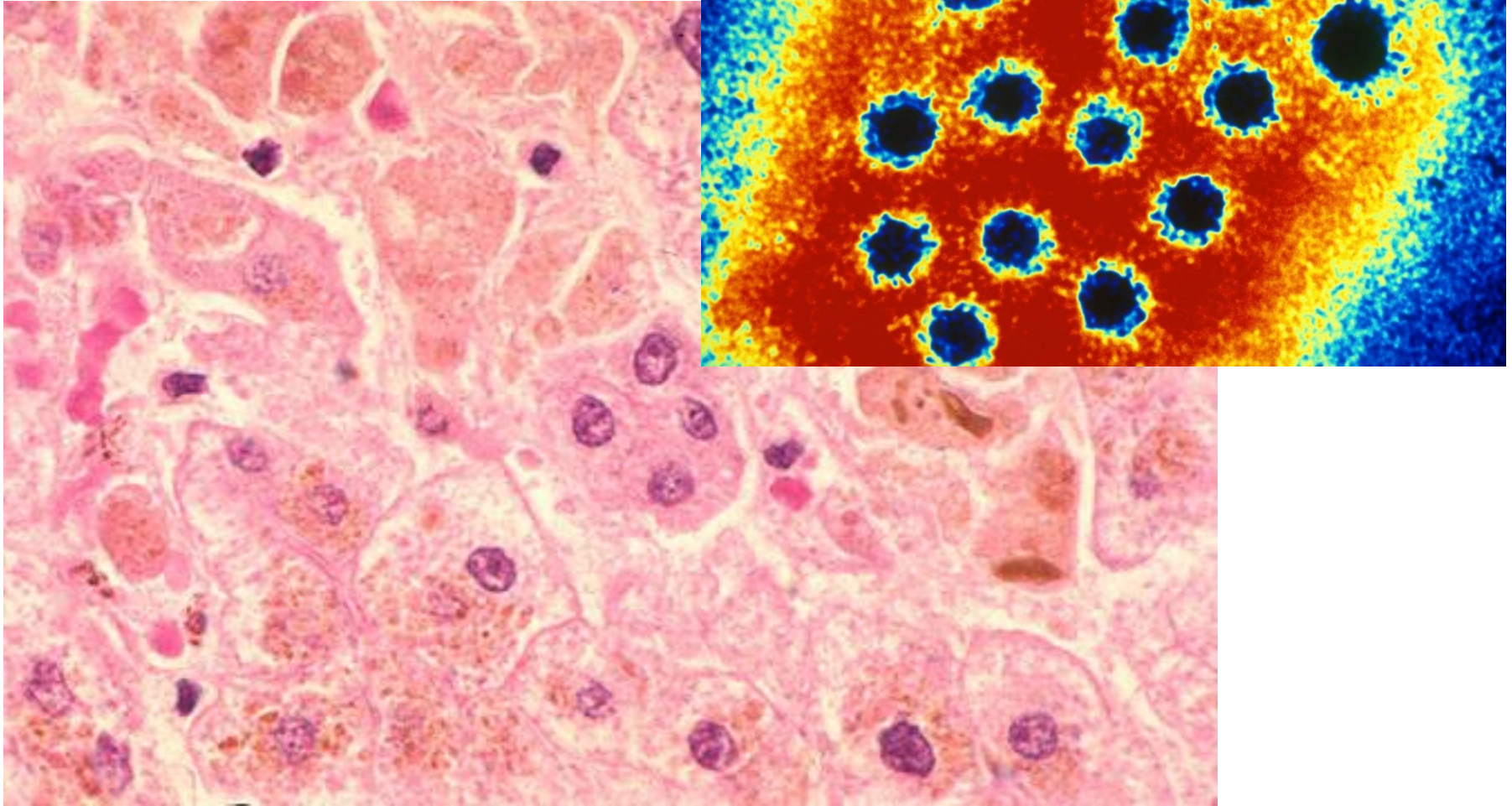
<http://info.debgroup.com/blog/bid/261032/Norovirus-Often-Epidemic-in-Winter-Months-with-Severe-Gastro-Infections>  
[www.northcarolinahealthnews.org/2012/02/03/just-how-many-norovirus-cases-are-there-in-nc-well-never-know/](http://www.northcarolinahealthnews.org/2012/02/03/just-how-many-norovirus-cases-are-there-in-nc-well-never-know/)

# Shigelosis



[www.cdc.gov/shigella/](http://www.cdc.gov/shigella/)  
[https://bioweb.uwlax.edu/bio203/s2013/ward\\_aman/classification.htm](https://bioweb.uwlax.edu/bio203/s2013/ward_aman/classification.htm)

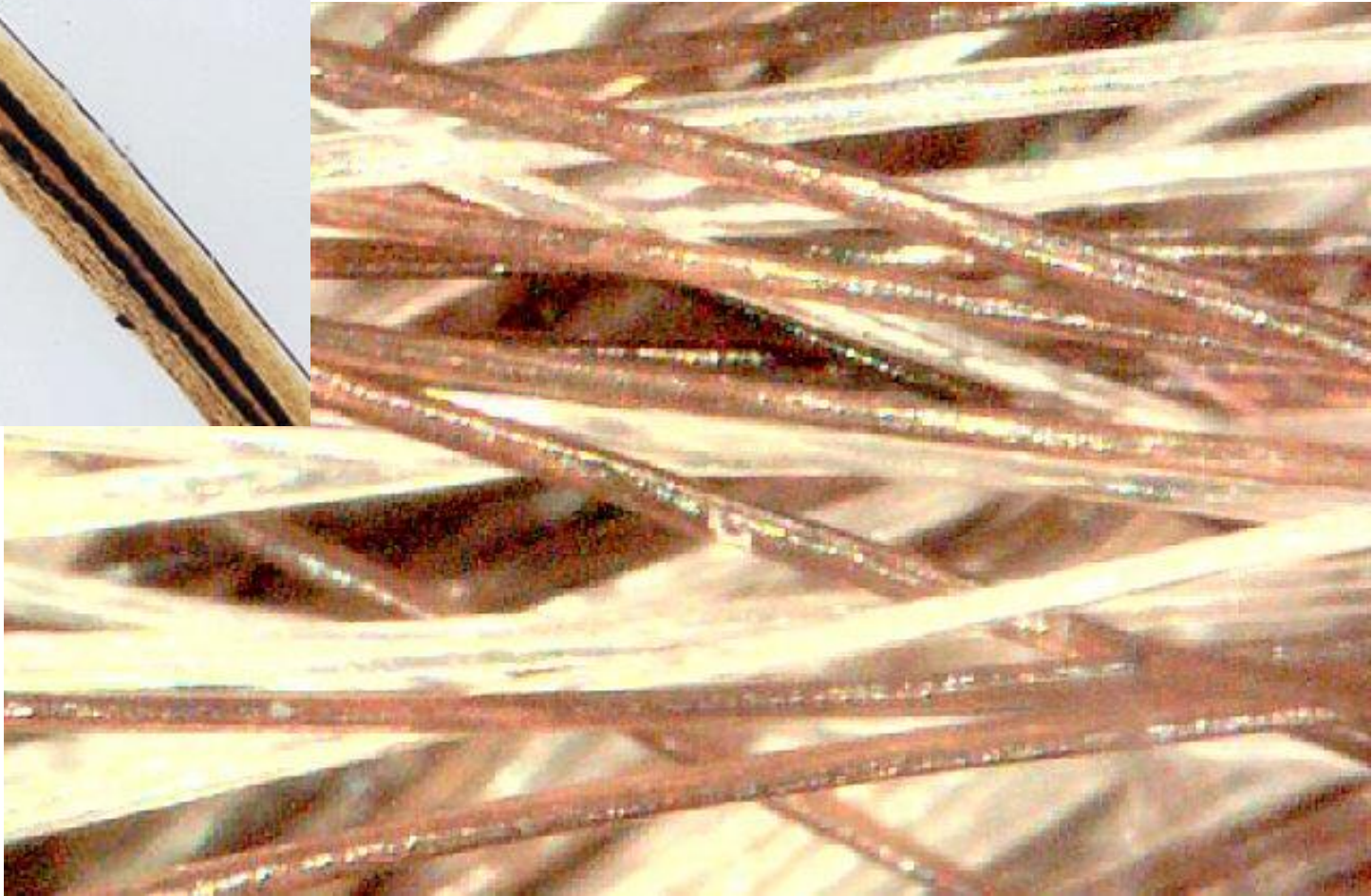
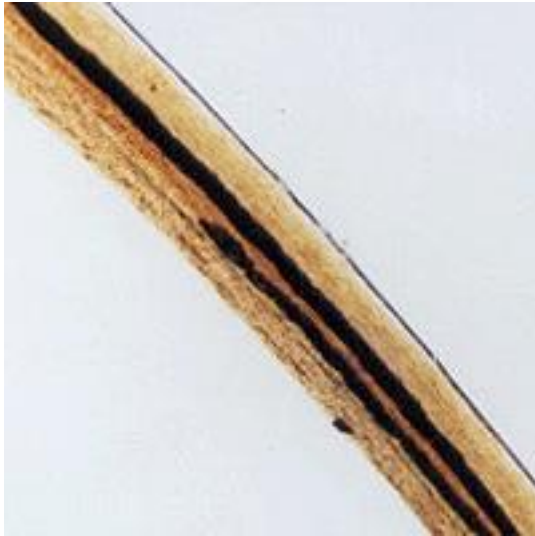
# Hepatitis A



[www.huffingtonpost.ca/2013/12/03/lethbridge-hepatitis-a-alert\\_n\\_4380458.html](http://www.huffingtonpost.ca/2013/12/03/lethbridge-hepatitis-a-alert_n_4380458.html)  
[www.meddean.luc.edu/lumen/MedEd/orfpath/virhepa.htm](http://www.meddean.luc.edu/lumen/MedEd/orfpath/virhepa.htm)



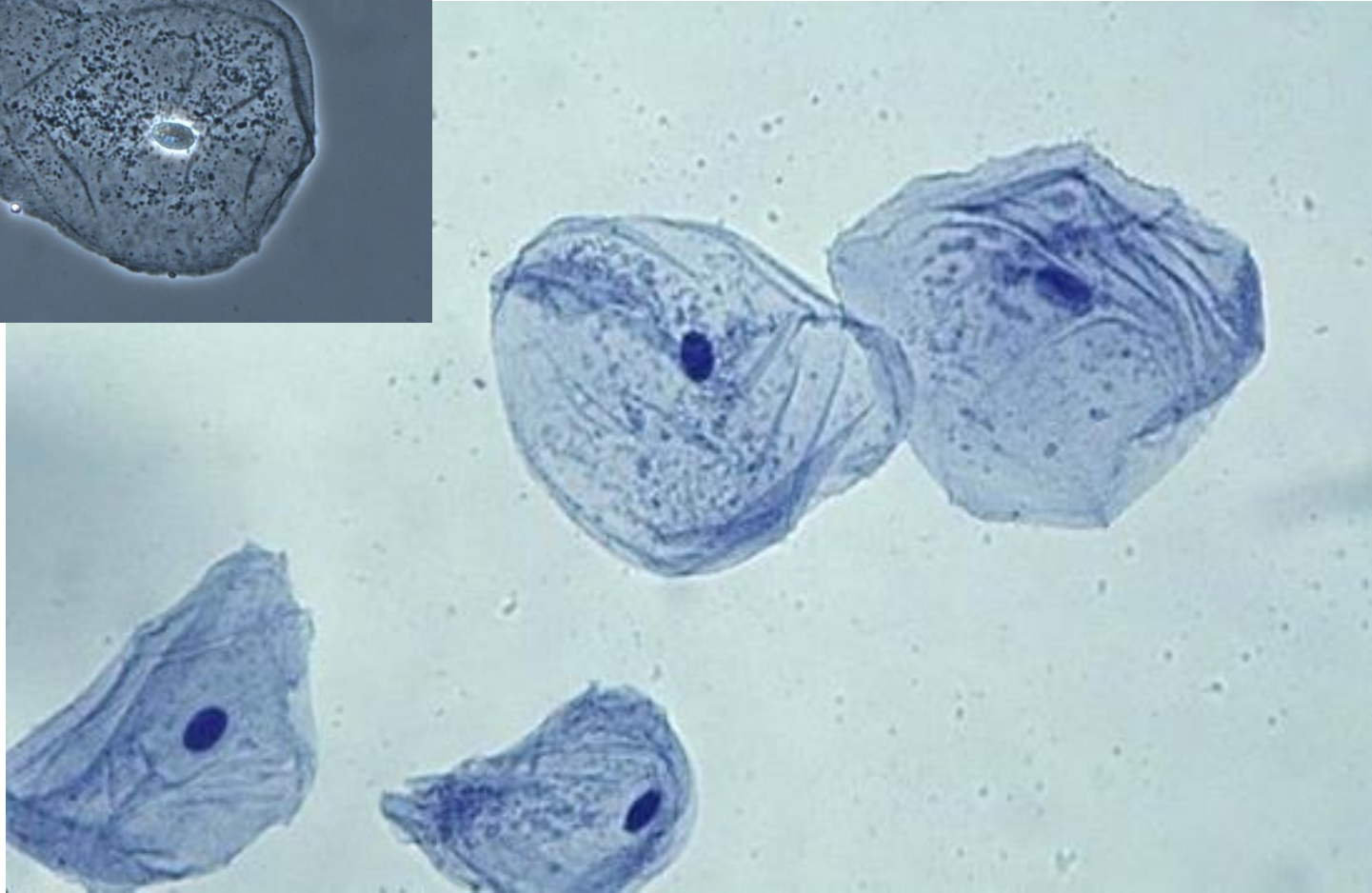
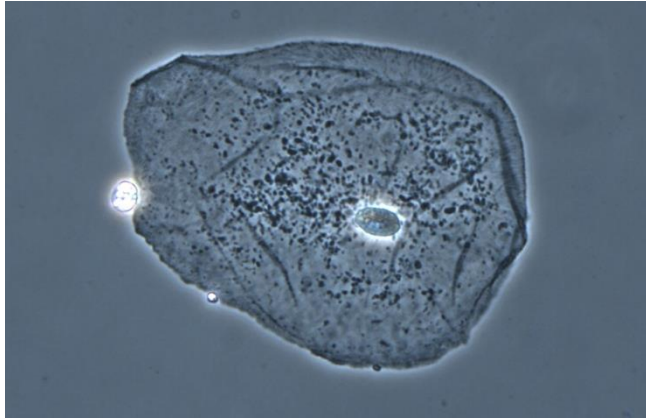
# Cabello humano



[www.minresco.com/dinolite/gallery.htm](http://www.minresco.com/dinolite/gallery.htm)

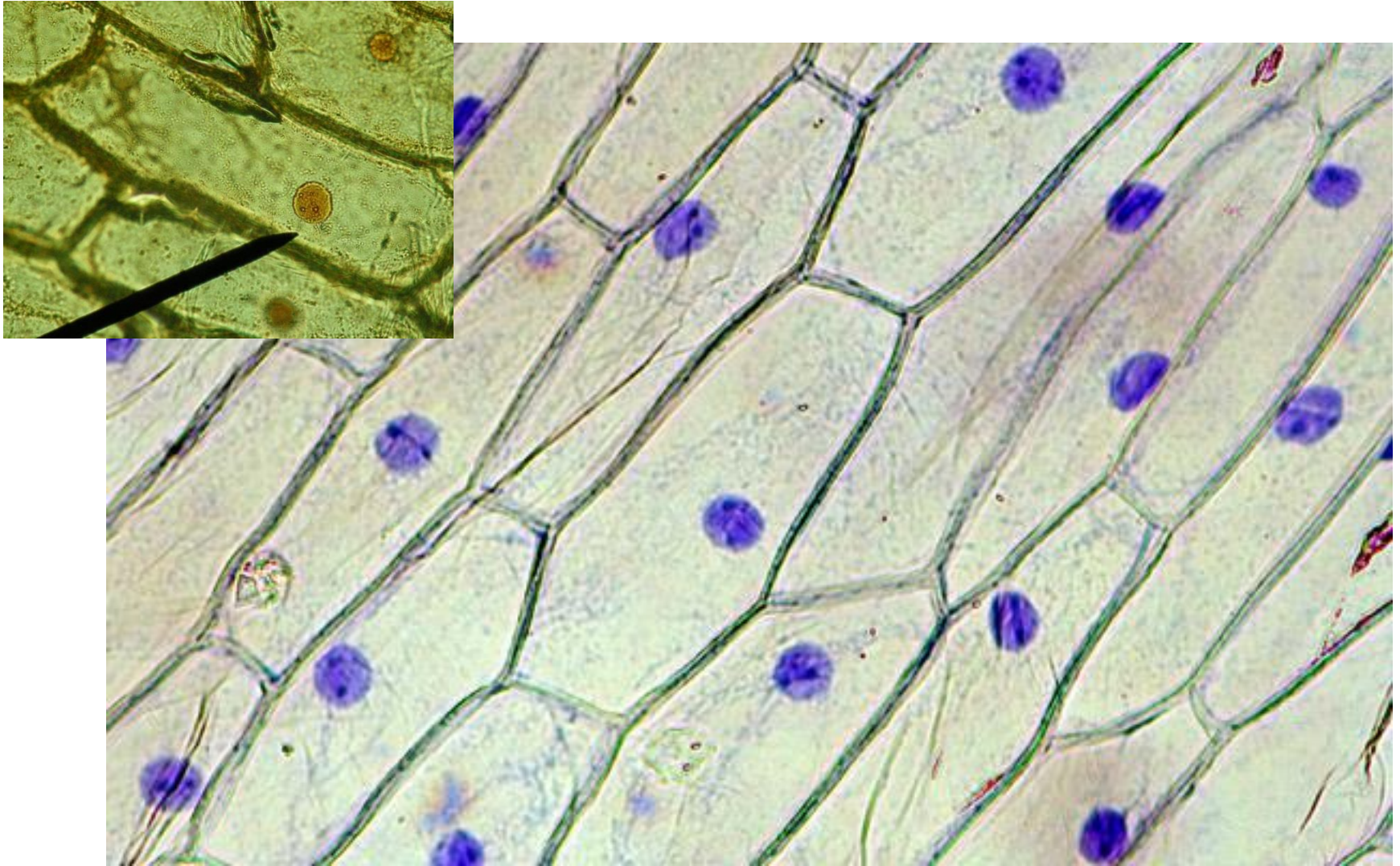
[www2.fbi.gov/hq/lab/fsc/backissu/jan2004/research/2004\\_01\\_research01b.htm](http://www2.fbi.gov/hq/lab/fsc/backissu/jan2004/research/2004_01_research01b.htm)

# Célula de la mejilla



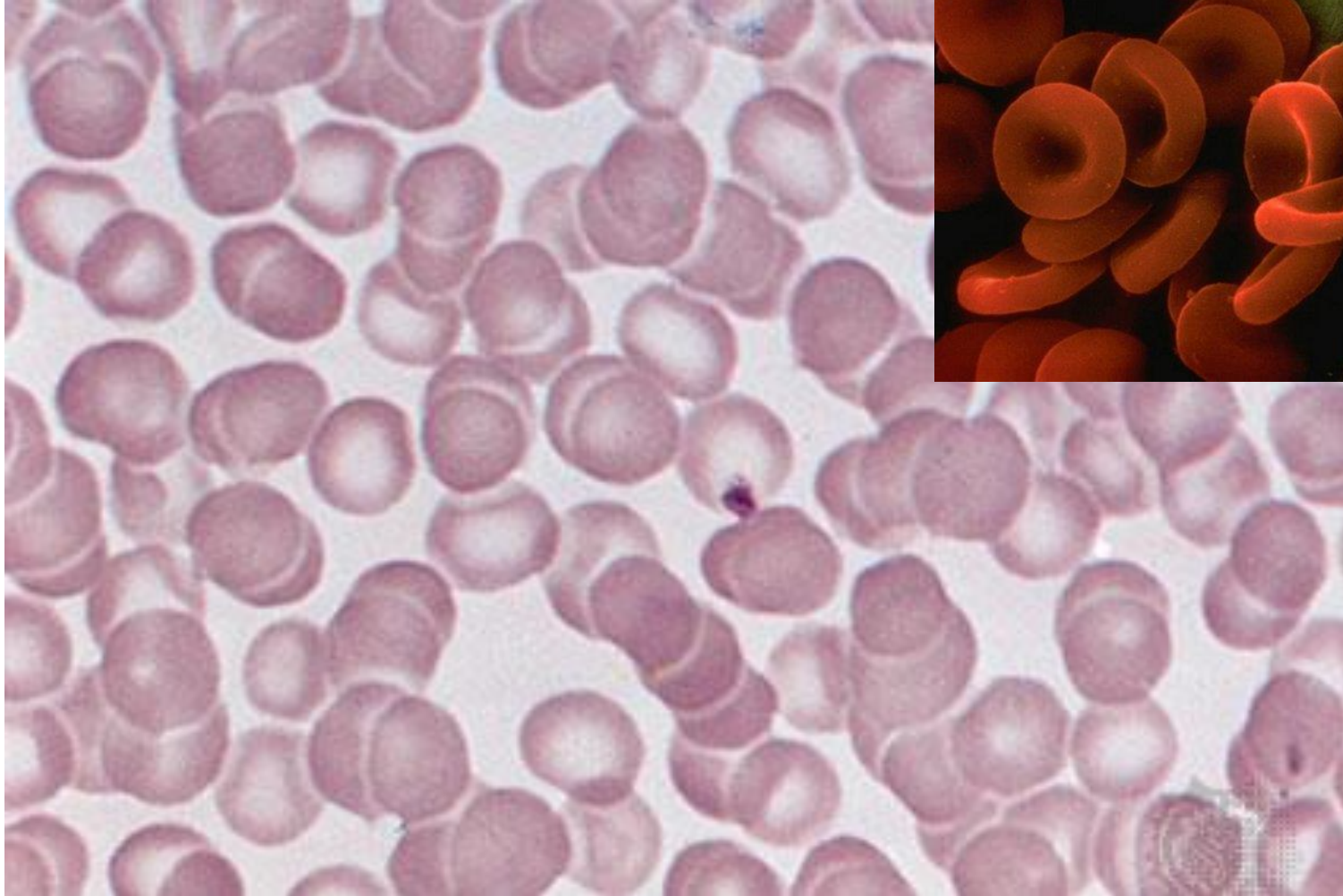
[https://commons.wikimedia.org/wiki/File:Cheek\\_cell\\_phase\\_contrast.jpg](https://commons.wikimedia.org/wiki/File:Cheek_cell_phase_contrast.jpg)  
[www.ask.com/science/general-shape-cheek-cell-48e19b794260ed17](http://www.ask.com/science/general-shape-cheek-cell-48e19b794260ed17)

# Célula de la cebolla



[www.microbehunter.com/staining-of-onion-cell-nuclei/](http://www.microbehunter.com/staining-of-onion-cell-nuclei/)  
<http://facultyweb.cortland.edu/klotz/GenericPage.asp?recID=195>

# Glóbulos rojos



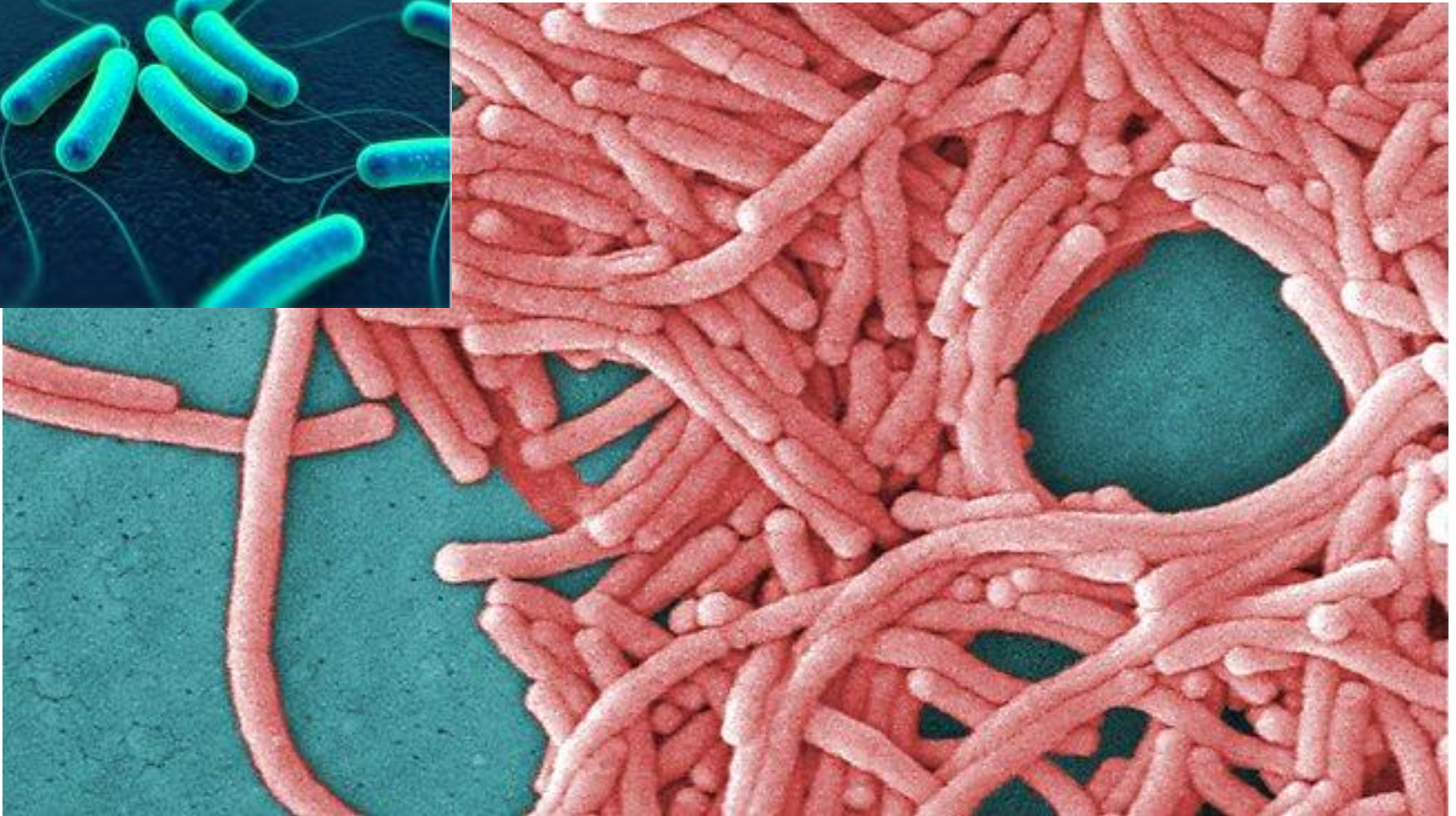
[www.britannica.com/science/red-blood-cell](http://www.britannica.com/science/red-blood-cell)  
[www.scientiapress.com/tag/red-blood-cell](http://www.scientiapress.com/tag/red-blood-cell)

# DNA



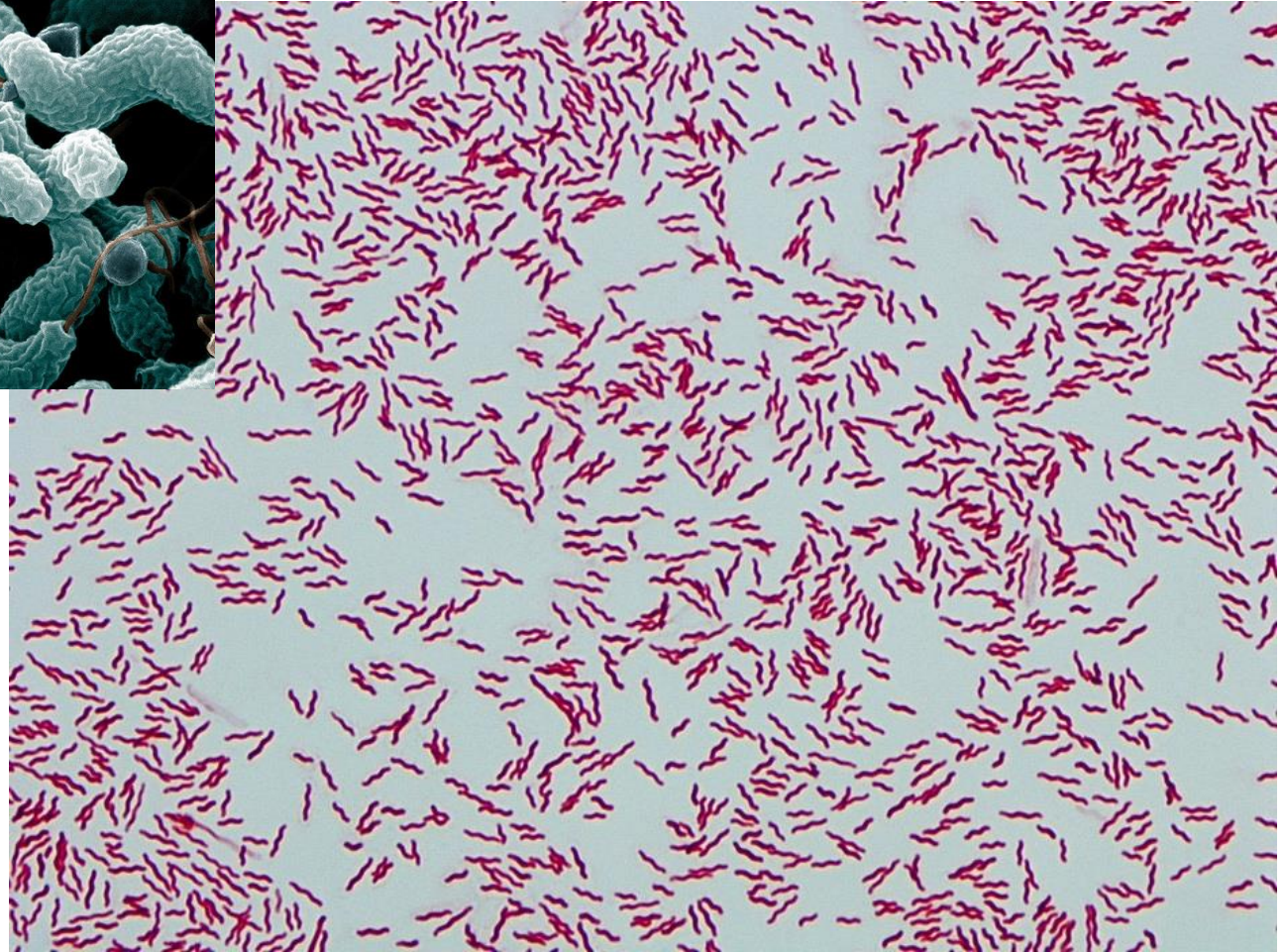
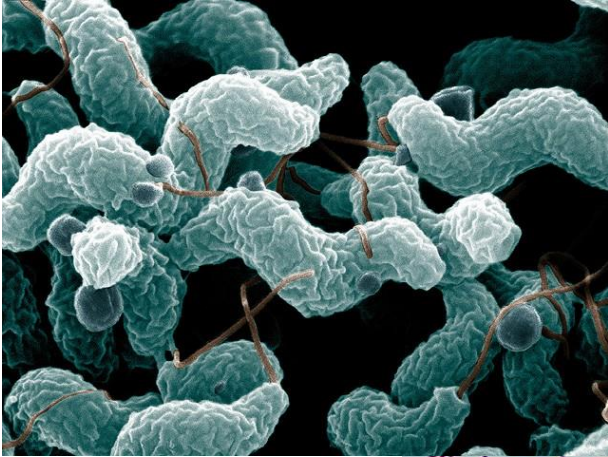
[www.popsci.com/disease-lurks-dna-more-previously-thought](http://www.popsci.com/disease-lurks-dna-more-previously-thought)

# Legionella



[www.stanstedlabs.com/technical-info/what-is-legionella/](http://www.stanstedlabs.com/technical-info/what-is-legionella/)  
<http://chd.region.waterloo.on.ca/en/healthyLivingHealthProtection/legionella.asp>

# Campylobacter



<https://zoonoitecology.wordpress.com/category/campylobacter/>  
<http://ytpo.net/viruses/virus.php?id=1345&name=Campylobacter&limit=1340>

# Café molido



[www.flickr.com/photos/srslyguys/8403892410](http://www.flickr.com/photos/srslyguys/8403892410)



# Tierra (suelo)

